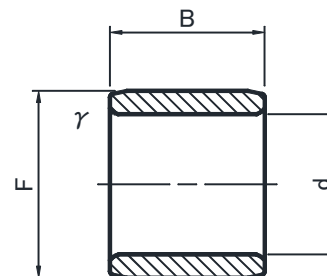


# MACHINED TYPE INNER RINGS STAINLESS STEEL



IR..M TYPE

**STAINLESS  
STEEL !!**



IR...M

Shaft Diameter (mm)	Designation	Dimensions (mm)			Standard mounting dimensions (mm)		Weight (g)	Usable bearing designation	
		F	B	1) $\gamma$ s min	MIN	MAX		RNA 49	NK
d	IR				da				
5	IR 5812M	8	12	0.3	7	7.7	3	—	NK 8/12M
5	IR 5816M	8	16	0.3	7	7.7	4	—	NK 8/16M
6	IR 6810M	8	10	0.15	7.2	7.7	1.7	RNA 496M	—
6	IR 6912M	9	12	0.3	8	8.7	3.2	—	NK 9/12M
6	IR 6916M	9	16	0.3	8	8.7	4.3	—	NK 9/16M
7	IR 7910M	9	10	0.15	8.2	8.7	1.9	RNA 497M	—
7	IR 71012M	10	12	0.3	9	9.7	3.6	—	NK 10/12M
7	IR 71016M	10	16	0.3	9	9.7	5	—	NK 10/16M
8	IR 81011M	10	11	0.15	9.2	9.7	2.4	RNA 498M	—
9	IR 91211M	12	11	0.3	11	11.5	3.1	RNA 499M	—
9	IR 91212M	12	12	0.3	11	11.5	4.5	—	NK 12/12M
9	IR 91216M	12	16	0.3	11	11.5	6	—	NK 12/16M
10	IR 101413M	14	13	0.3	12	13	7.5	RNA 4900M	—
10	IR 101416M	14	16	0.3	12	13	9	—	NK 14/16M
10	IR 101420M	14	20	0.3	12	13	11.5	—	NK 14/20M
12	IR 121613M	16	13	0.3	14	15	8.5	RNA 4901M	—
12	IR 121616M	16	16	0.3	14	15	10.5	—	NK 16/16M
12	IR 121620M	16	20	0.3	14	15	13.5	—	NK 16/20M
15	IR 151916M	19	16	0.3	17	18	12.5	—	NK 19/16M
15	IR 151920M	19	20	0.3	17	18	16	—	NK 19/20M
15	IR 152013M	20	13	0.3	17	19	13.5	RNA 4902M	—
17	IR 172213M	22	13	0.3	19	21	15.5	RNA 4903M	—
20	IR 202517M	25	17	0.3	22	24	23	RNA 4904M	—
25	IR 253017M	30	17	0.3	27	29	28.5	RNA 4905M	—

1) Smallest permissible chamfer dimension.



JNS CO., LTD.  
NOSE SEIKO CO., LTD.