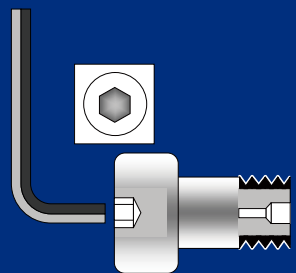


CAM FOLLOWERS

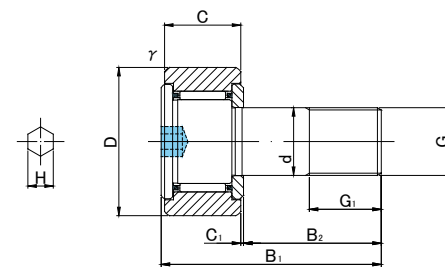
HEXAGON SOCKET ON STUD HEAD



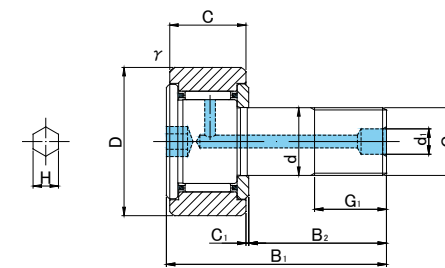
CF..A



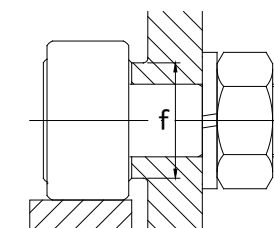
CF.VA



CF3(V)A~CF10-1(V)A



CF10(V)AK~CF10-1(V)AK



CF..A TYPE

Prepacked Grease

Stud diameter (mm)	Designation	Dimensions (mm)																Basic dynamic load rating	Basic static load rating	Largest permissible load	Limiting speed *	Track load capacity		Max tightening torque	Mass	
		Cylindrical outer ring				Crowned outer ring																Cylindrical outer ring N	Crowned outer ring N			N·m
h7 tolerance	Without seals	With seals	Without seals	With seals	D	C	d	G	G1	B1	B2	B3	C1	d1	d2	H	r _s min	f min	Cr N	Cor N	N	rpm	N	N	N·m	g (approx)
3	CF 3A	CF 3UUA	CF 3RA	CF 3UURA	10	7	3	M3×0.5	5	17	9	—	0.5	—	—	2	0.2	6.8	1 470	1 180	360	47 000	1 370	540	0.4	4.5
	CF 3VA	CF 3VUUA	CF 3VRA	CF 3VUURA															2 800	2 500	360	18 800				
4	CF 4A	CF 4UUA	CF 4RA	CF 4UURA	12	8	4	M4×0.7	6	20	11	—	0.5	—	—	2.5	0.3	8.6	2 060	2 050	780	37 000	1 760	690	1	7.5
	CF 4VA	CF 4VUUA	CF 4VRA	CF 4VUURA															4 000	4 300	780	14 800				
5	CF 5A	CF 5UUA	CF 5RA	CF 5UURA	13	9	5	M5×0.8	7.5	23	13	—	0.5	—	—	3	0.3	9.7	3 140	2 770	1 420	29 000	2 250	780	2	10.5
	CF 5VA	CF 5VUUA	CF 5VRA	CF 5VUURA															5 100	5 500	1 420	11 600				
6	CF 6A	CF 6UUA	CF 6RA	CF 6UURA	16	11	6	M6×1	8	28	16	—	0.6	—	—	3	0.3	11	3 630	3 630	2 110	25 000	3 430	1 080	3	18.5
	CF 6VA	CF 6VUUA	CF 6VRA	CF 6VUURA															6 960	8 530	2 110	12 000				
8	CF 8A	CF 8UUA	CF 8RA	CF 8UURA	19	11	8	M8×1.25	10	32	20	—	0.6	—	—	4	0.3	13	4 310	4 710	4 710	20 000	4 020	1 370	8	28.5
	CF 8VA	CF 8VUUA	CF 8VRA	CF 8VUURA															8 130	11 170	4 710	9 000				
10	CF10A	CF10UUA	CF10RA	CF10UURA	22	12	10	M10×1.25	12	36	23	—	0.6	—	—	5	0.3	15	5 390	6 860	6 860	17 000	4 700	1 670	15	45
	CF10VA	CF10VUUA	CF10VRA	CF10VUURA															9 510	14 500	7 450	7 500				
10	CF10-1A	CF10-1UUA	CF10-1RA	CF10-1UURA	26	12	10	M10×1.25	12	36	23	—	0.6	—	—	5	0.3	15	5 390	6 860	6 860	17 000	5 490	2 060	15	60
	CF10-1VA	CF10-1VUUA	CF10-1VRA	CF10-1VUURA															9 510	14 500	7 450	7 500				
10	CF10AK	CF10UAK	CF10RAK	CF10UURAK	22	12	10	M10×1	12	36	23	—	0.6	4	—	5	0.3	15	5 390	6 860	6 860	17 000	4 700	1 670	15	45
	CF10VAK	CF10VUAK	CF10VRAK	CF10VUURAK															9 510	14 500	7 450	7 500				
10	CF10-1AK	CF10-1UAK	CF10-1RAK	CF10-1UURAK	26	12	10	M10×1	12	36	23	—	0.6	4	—	5	0.3	15	5 390	6 860	6 860	17 000	5 490	2 060	15	60
	CF10-1VAK	CF10-1VUAK	CF10-1VRAK	CF10-1VUURAK															9 510	14 500	7 450	7 500				

* Without seals, suitable for grease lubrication. In case of oil lubrication, up to 130% of this value shall be permissible, and 70% of this value shall apply for types with seals.

OUTER RINGS TOLERANCE (μm)

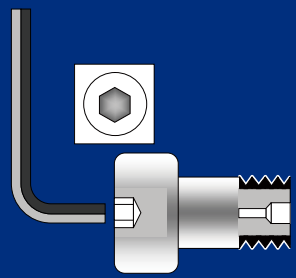
TYPE	Cylindrical outer ring	Crowned outer ring
CF3,CF4,CF5,CF6	0/-8	0/-50
CF8,CF10,CF10-1,CF12	0/-9	0/-50
CF12-1,CF16,CF18,CF20-1	0/-11	0/-50
CF20,CF24,CF24-1,CF30	0/-13	0/-50
CF30-1,CF30-2	0/-15	0/-50

ACCESSORIES

TYPE	STOP PLUG	RESIN PLUG	NUT
CF3/CF4/CF5/CF6/CF8/CF10/CF10-1	—	—	Attached
CF10K/CF10-1K	φ 4 Attached	φ 4 Attached	Attached
CF12/CF12-1/CF16/CF18	φ 6 Attached	φ 6 Attached	Attached
CF20/CF20-1/CF24/CF24-1/CF30/CF30-1/CF30-2	φ 8 Attached	φ 8 Attached	Attached

CAM FOLLOWERS

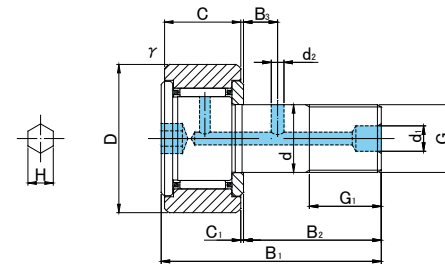
HEXAGON SOCKET ON STUD HEAD



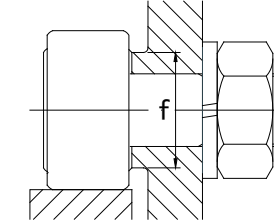
CF..A



CF..VA



CF12(V)A~CF30-2(V)A



CF..A TYPE

Prepacked Grease

Stud diameter (mm)	h7 tolerance	Designation				Dimensions (mm)															Basic dynamic load rating Cr N	Basic static load rating Cor N	Largest permissible load N	Limiting speed * rpm	Track load capacity		Max tightening torque N·m	Mass g (approx)
		Cylindrical outer ring		Crowned outer ring R500(CF12 ~ CF18) R1000(CF20 ≤)		D	C	d	G	G1	B1	B2	B3	C1	d1	d2	H	rs min	f min	Cylindrical outer ring N					Crowned outer ring N			
		Without seals	With seals	Without seals	With seals																							
12	0 -0.018	CF12A	CF12UUA	CF12RA	CF12UURA	30	14	12	M12×1.5	13	40	25	6	0.6	6	3	6	0.6	20	7 940	9 800	9 800	14 000	7 060	2 450	22	95	
		CF12VA	CF12VUUA	CF12VRA	CF12VUURA															13 430	19 700	11 270	6 000					
12	0 -0.018	CF12-1A	CF12-1UUA	CF12-1RA	CF12-1UURA	32	14	12	M12×1.5	13	40	25	6	0.6	6	3	6	0.6	20	7 940	9 800	9 800	14 000	7 450	2 740	22	105	
		CF12-1VA	CF12-1VUUA	CF12-1VRA	CF12-1VUURA															13 430	19 700	11 270	6 000					
16	0 -0.018	CF16A	CF16UUA	CF16RA	CF16UURA	35	18	16	M16×1.5	17	52	32.5	8	0.8	6	3	6	0.6	24	12 050	18 330	18 330	10 000	11 200	3 140	58	170	
		CF16VA	CF16VUUA	CF16VRA	CF16VUURA															20 680	37 630	19 800	4 500					
18	0 -0.018	CF18A	CF18UUA	CF18RA	CF18UURA	40	20	18	M18×1.5	19	58	36.5	8	0.8	6	3	6	1	26	14 700	25 200	25 200	8 500	14 400	3 720	87	250	
		CF18VA	CF18VUUA	CF18VRA	CF18VUURA															25 280	51 350	26 560	3 500					
20	0 -0.021	CF20A	CF20UUA	CF20RA	CF20UURA	52	24	20	M20×1.5	21	66	40.5	9	0.8	8	4	8	1	36	20 680	34 600	32 140	7 000	23 200	8 230	120	460	
		CF20VA	CF20VUUA	CF20VRA	CF20VUURA															33 120	64 480	32 140	3 500					
20	0 -0.021	CF20-1A	CF20-1UUA	CF20-1RA	CF20-1UURA	47	24	20	M20×1.5	21	66	40.5	9	0.8	8	4	8	1	36	20 680	34 600	32 140	7 000	21 000	7 150	120	385	
		CF20-1VA	CF20-1VUUA	CF20-1VRA	CF20-1VUURA															33 120	64 480	32 140	3 500					
24	0 -0.021	CF24A	CF24UUA	CF24RA	CF24UURA	62	29	24	M24×1.5	25	80	49.5	11	0.8	8	4	8	1	40	30 480	52 630	49 500	6 500	34 200	10 500	220	815	
		CF24VA	CF24VUUA	CF24VRA	CF24VUURA															46 550	92 020	49 500	3 000					
24	0 -0.021	CF24-1A	CF24-1UUA	CF24-1RA	CF24-1UURA	72	29	24	M24×1.5	25	80	49.5	11	0.8	8	4	8	1	40	30 480	52 630	49 500	6 500	39 800	12 900	220	1 140	
		CF24-1VA	CF24-1VUUA	CF24-1VRA	CF24-1VUURA															46 550	92 020	49 500	3 000					
30	0 -0.021	CF30A	CF30UUA	CF30RA	CF30UURA	80	35	30	M30×1.5	32	100	63	15	1	8	4	8	1	46	45 370	85 060	73 700	5 000	52 600	14 900	450	1 870	
		CF30VA	CF30VUUA	CF30VRA	CF30VUURA															67 620	144 060	73 700	2 200					
30	0 -0.021	CF30-1A	CF30-1UUA	CF30-1RA	CF30-1UURA	85	35	30	M30×1.5	32	100	63	15	1	8	4	8	1	46	45 370	85 060	73 700	5 000	56 000	56 000	450	2 030	
		CF30-1VA	CF30-1VUUA	CF30-1VRA	CF30-1VUURA															67 620	144 060	73 700	2 200					
30	0 -0.021	CF30-2A	CF30-2UUA	CF30-2RA	CF30-2UURA	90	35	30	M30×1.5	32	100	63	15	1	8	4	8	1	46	45 370	85 060	73 700	5 000	59 300	59 300	450	2 220	
		CF30-2VA	CF30-2VUUA	CF30-2VRA	CF30-2VUURA															67 620	144 060	73 700	2 200					

* Without seals, suitable for grease lubrication. In case of oil lubrication, up to 130% of this value shall be permissible, and 70% of this value shall apply for types with seals.

OUTER RINGS TOLERANCE (μm)

TYPE	Cylindrical outer ring	Crowned outer ring
CF3,CF4,CF5,CF6	0/-8	0/-50
CF8,CF10,CF10-1,CF12	0/-9	0/-50
CF12-1,CF16,CF18,CF20-1	0/-11	0/-50
CF20,CF24,CF24-1,CF30	0/-13	0/-50
CF30-1,CF30-2	0/-15	0/-50

ACCESSORIES

TYPE	STOP PLUG	RESIN PLUG	NUT
CF3/CF4/CF5/CF6/CF8/CF10/CF10-1	—	—	Attached
CF10K/CF10-1K	φ 4 Attached	φ 4 Attached	Attached
CF12/CF12-1/CF16/CF18	φ 6 Attached	φ 6 Attached	Attached
CF20/CF20-1/CF24/CF24-1/CF30/CF30-1/CF30-2	φ 8 Attached	φ 8 Attached	Attached